

SMT SPOOL

- SMT fully automated manufacturing process can increase production stability and production efficiency.
- Welding for reinstallation can increase product reliability.
- Spool designed for easy assembly, quick release purposes.
- Lateral fastening contributes to direction limited panels.

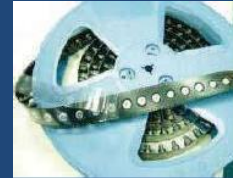
SMT SPOOL Patented.



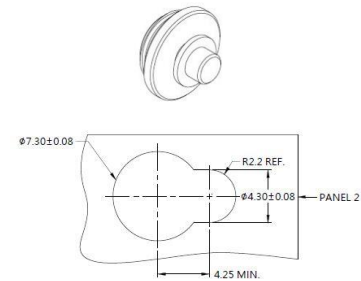
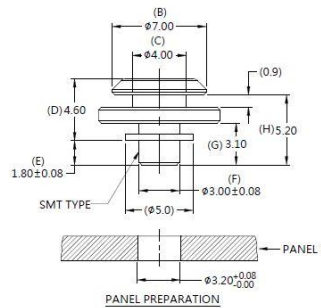
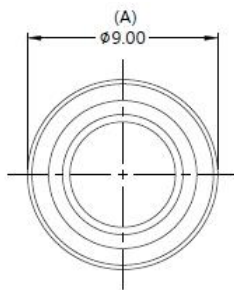
Material and Finish

Spool :
Carbon steel, Tin Finish.

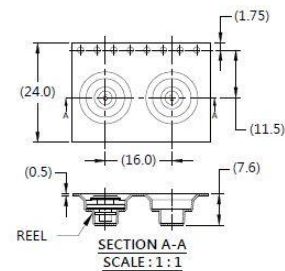
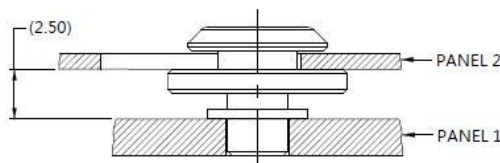
Reel



Panel Preparation



Installation



Dimensions (mm)

P/N	PANEL THICKNESS	
	PANEL 1	PANEL 2
82-050-02-046-01-RL	1.83 MIN	0.8 MAX

SMT SPOOL

- SMT fully automated manufacturing process can increase production stability and production efficiency.
- Welding for reinstallation can increase product reliability.
- Spool designed for easy assembly, quick release purposes.
- Lateral fastening contributes to direction limited panels.

SMT SPOOL Patented.



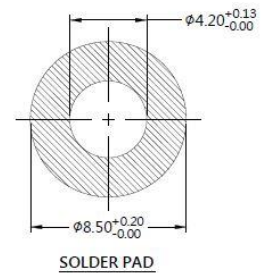
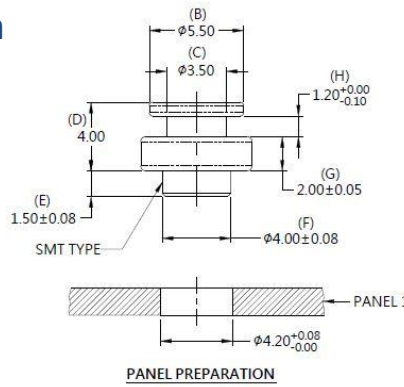
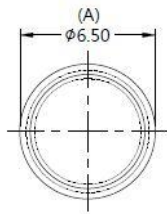
Material and Finish

Spool :
Carbon steel, Tin Finish.

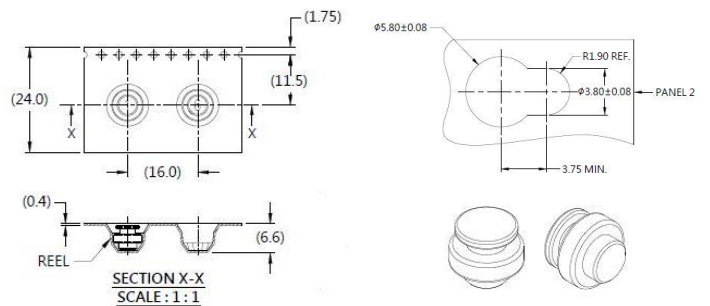
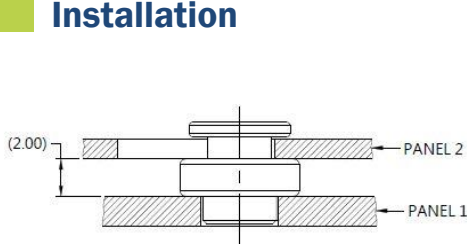
Reel



Panel Preparation



Installation



Dimensions (mm)

P/N	PANEL THICKNESS	
	PANEL 1	PANEL 2
82-050-02-040-01-RL	1.6 MIN.	1.0 MAX.

SMT SPOOL

- SMT fully automated manufacturing process can increase production stability and production efficiency.
- Welding for reinstallation can increase product reliability.
- Spool designed for easy assembly, quick release purposes.
- Lateral fastening contributes to direction limited panels.

SMT SPOOL Patented.



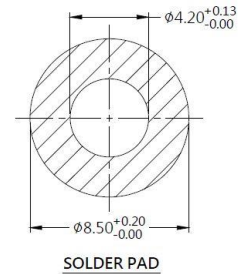
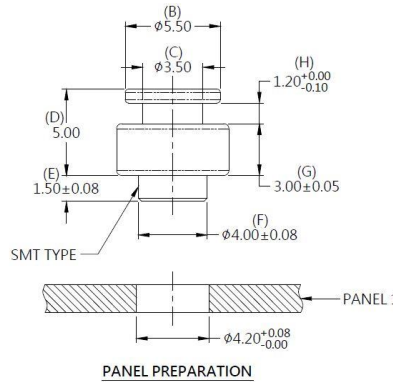
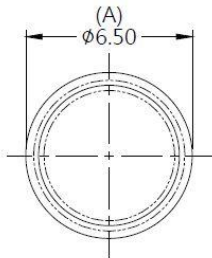
Material and Finish

Spool :
Carbon steel, Tin Finish.

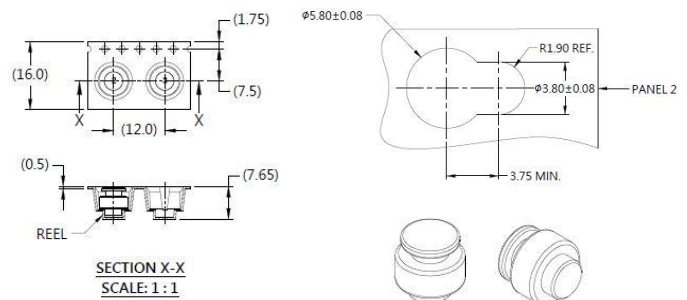
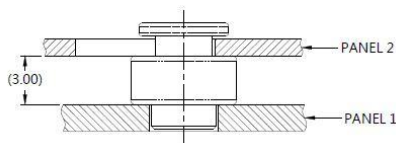
Reel



Panel Preparation



Installation



Dimensions (mm)

P/N	PANEL THICKNESS	
	PANEL 1	PANEL 2
82-050-02-050-02-RL	1.6 MIN.	1.0 MAX.

SMT SPOOL

- SMT fully automated manufacturing process can increase production stability and production efficiency.
- Welding for reinstallation can increase product reliability.
- Spool designed for easy assembly, quick release purposes.
- Lateral fastening contributes to direction limited panels.

SMT SPOOL Patented.



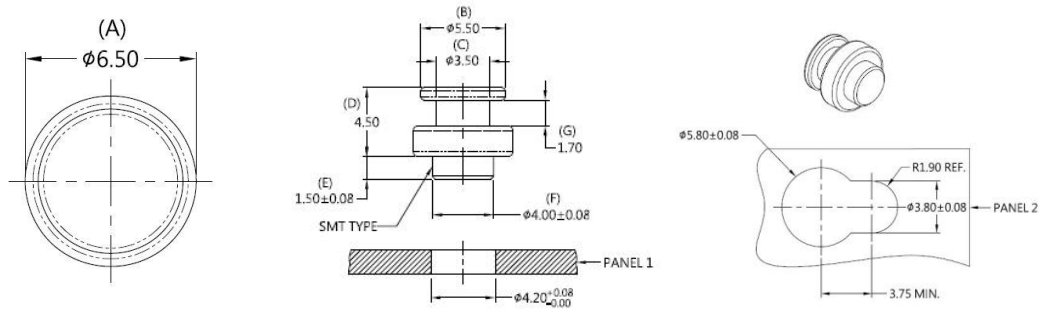
Material and Finish

Spool :
Carbon steel, Tin Finish.

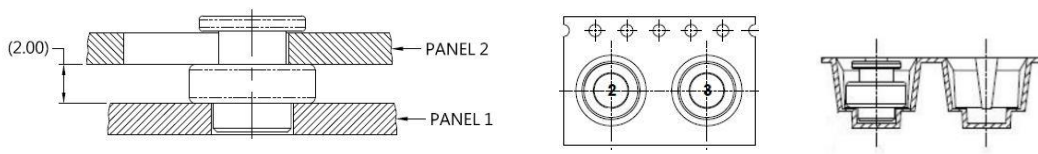
Reel



Panel Preparation



Installation



Dimensions (mm)

P/N	PANEL THICKNESS	
	PANEL 1	PANEL 2
82-050-02-045-01	1.6 MIN	1.6 MAX

SMT SERIES

- Special two-step design provides quick assembly and disassembly performance of double-layer
- The intuitive operation provides the horizontal positioning function
- Replace the traditional screw-locking way, effectively saving time and cost
- SMT fully automated manufacturing process increase production stability and production efficiency

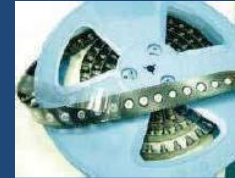
Double SMT Spool Patented.



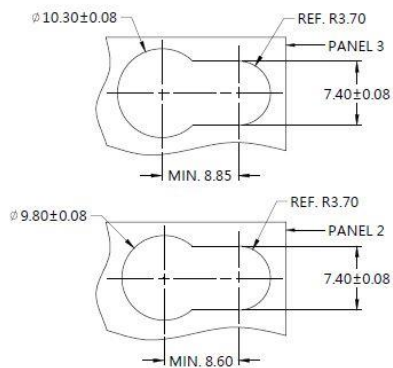
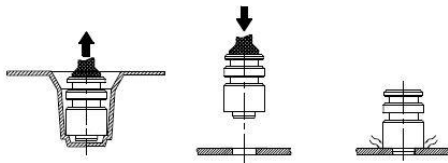
Material and Finish

Spool :
Carbon Steel, Tin Finish

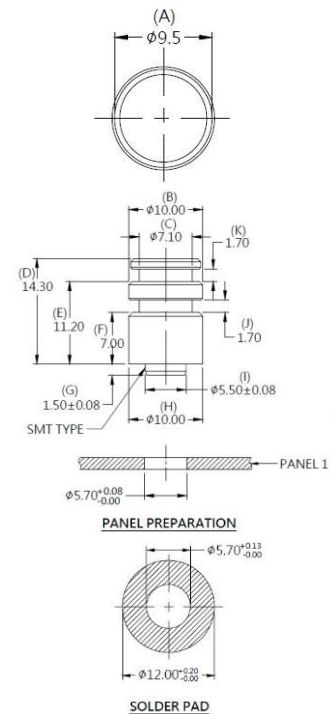
Reel



Installation



Panel Preparation



Dimensions (mm)

LENGTH "T"	PROJECTION		PANEL THICKNESS			DIMENSINOS	
	"P-1"	"P-2"	PANEL 1	PANEL 2	PANEL 3	" L "	" B "
~	~	~	1.6	1.5	1.5	~	~