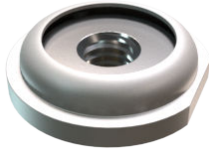


FLOATING NUT SERIES

- Provide the nut a floating mechanism in its space, fitting counterparts to absorb tolerances.
- The bottom square anti-rotation design provides reliable locking torque.
- Locking in both directions, provides a more unlimited application mode.
- Automated manufacturing fully helps save labor costs.

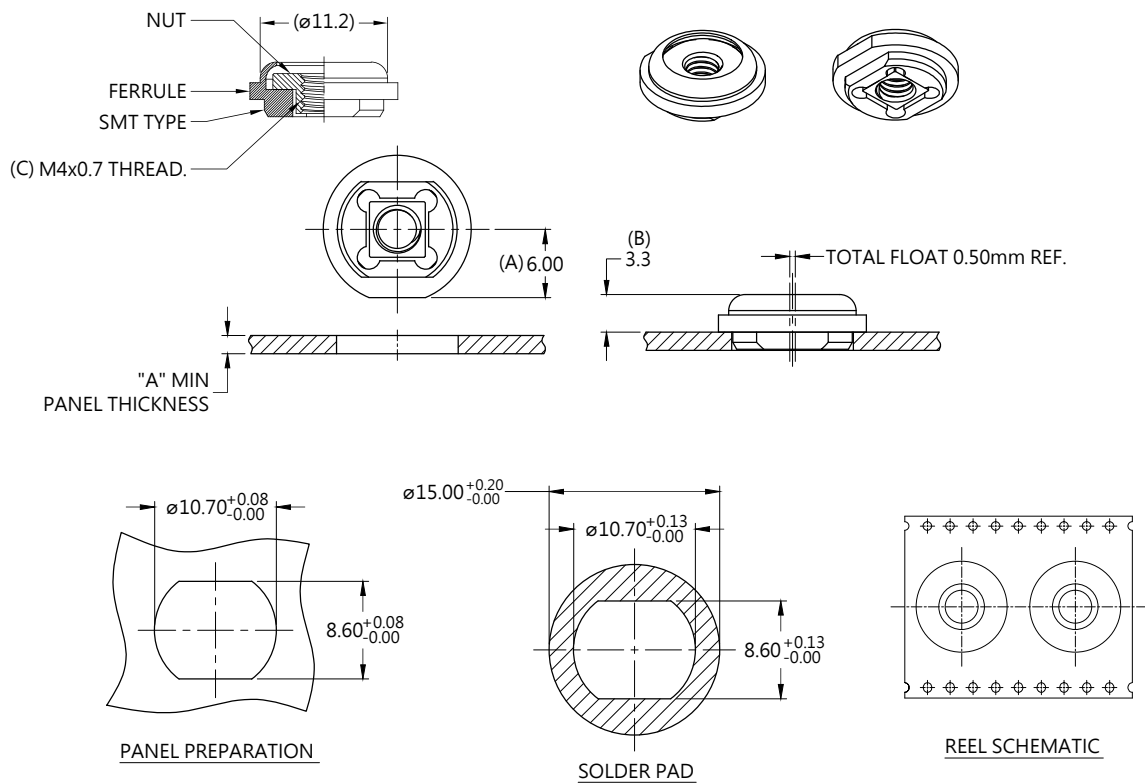
SMT Floating Nut Patented.



Material and Finish

FERRULE :
CARBON STEEL , TIN FINISH.
NUT :
STAINLESS STEEL

■ Panel Preparation



■ Dimensions (mm)

LENGTH "T"	PROJECTION		PANEL THICKNESS		DIMENSIONS	
	"P-1"	"P-2"	"A" MIN	"A" MAX	" L "	" B "
~	~	~	1.6	~	/	/